

Theory to Research to Practice: Improving Implementation of Tiered Systems of Behavior Support.

, George Sugai

Center for Behavioral Education & Research
Center on Positive Behavioral Interventions & Supports
Neag School of Education
University of Connecticut
13 August 2015

www.pbis.org www.neswpbs.org www.cber.org

Positive Behaviour for Learning

CBER UCONN NEAG SCHOOL OF EDUCATION PBIS

PURPOSE

Revisit core features of **PB4L-SW** in multi-tiered behavior framework context. How theory shapes research & practice is considered using implementation examples from **school climate & positive behavior support**.

CBER UCONN NEAG SCHOOL OF EDUCATION PBIS

www.pbis.org

Presentations

www.neswpbs.org

CBER UCONN NEAG SCHOOL OF EDUCATION PBIS

Action Steps - Homework

SWPBS Feature	Action
1. What is <u>1 thing</u> you learned that you <u>did not know before</u> ?	
2. What <u>3 "big ideas"</u> will you <u>take back</u> to your colleagues?	
3. What is <u>1 practice</u> you will do <u>tomorrow</u> that you have not done before?	
4. What is <u>1 practice</u> you will consider <u>not</u> doing tomorrow?	
5. What is <u>1 enhancement</u> you can make in your teaching <u>environment</u> to increase likelihood of doing above?	

CBER UCONN NEAG SCHOOL OF EDUCATION PBIS

Why?

CBER UCONN NEAG SCHOOL OF EDUCATION PBIS

Nov 1985 Kanner

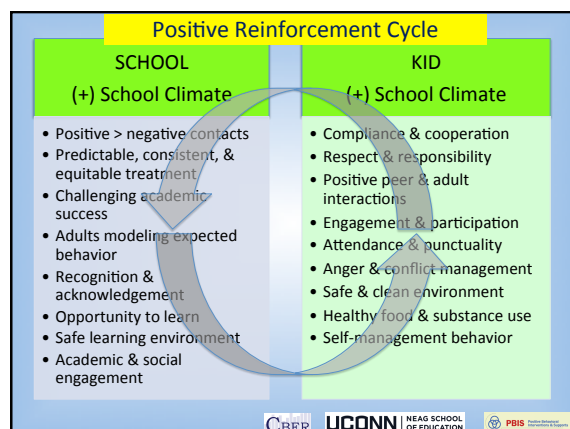
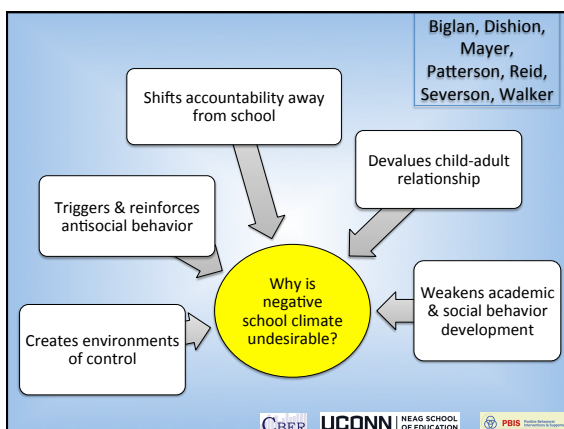
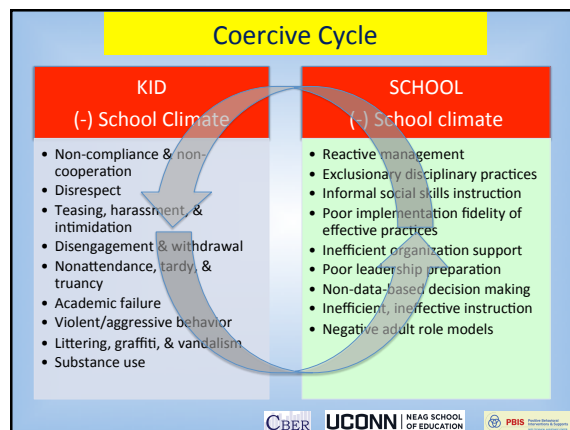
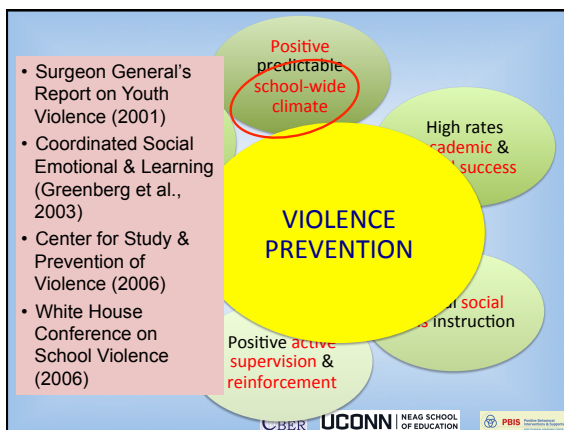
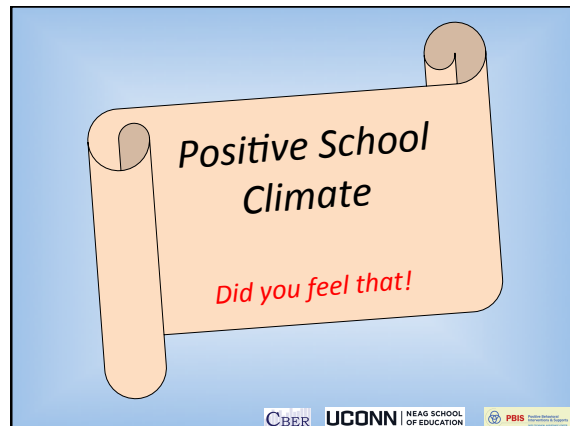
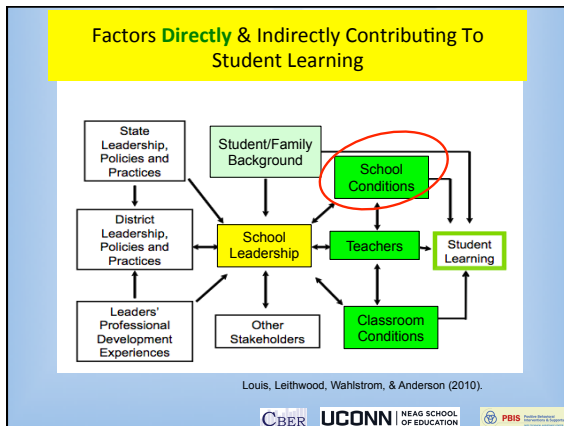
School Discipline Challenge:
Academic & behavior success (failure) are linked!

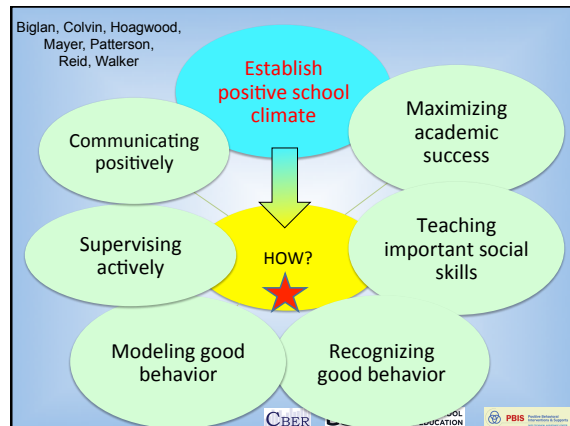
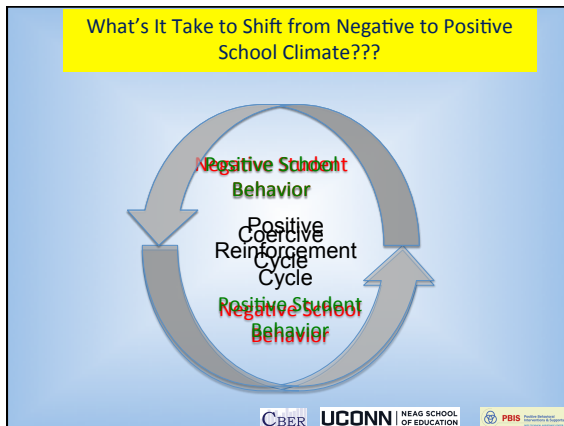
Teaching to Corner

EDCULTION

"This is the worst class I've ever had."

CBER UCONN NEAG SCHOOL OF EDUCATION PBIS

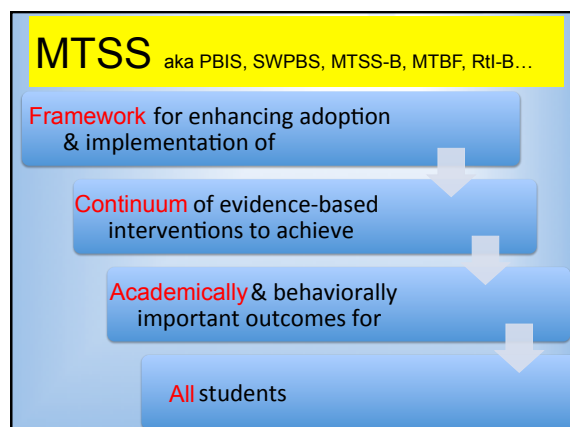
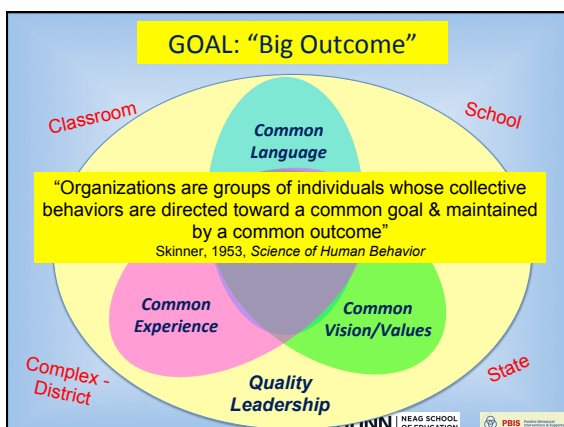
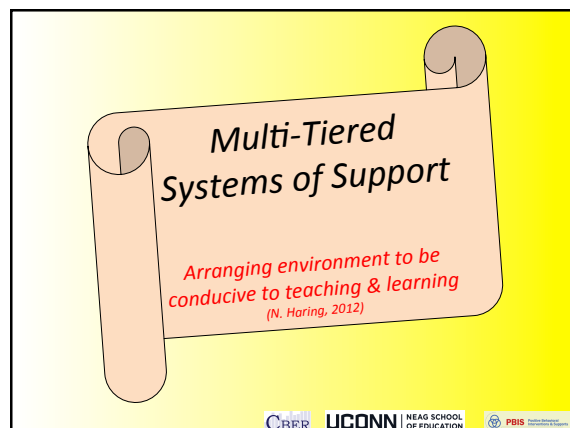


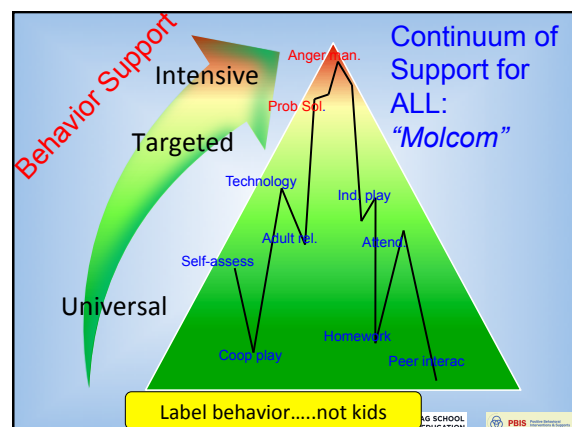
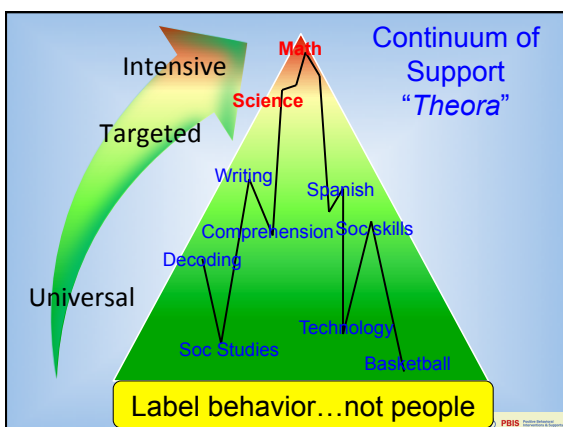
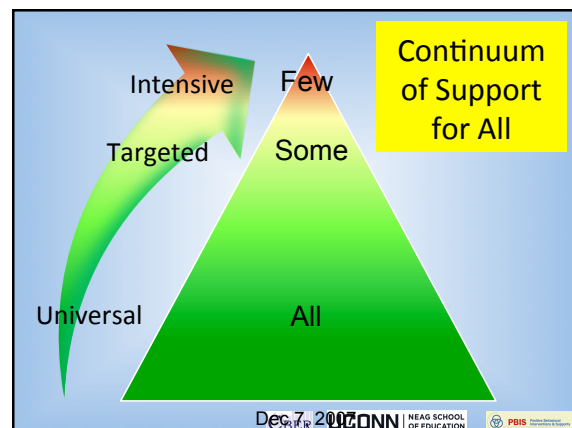
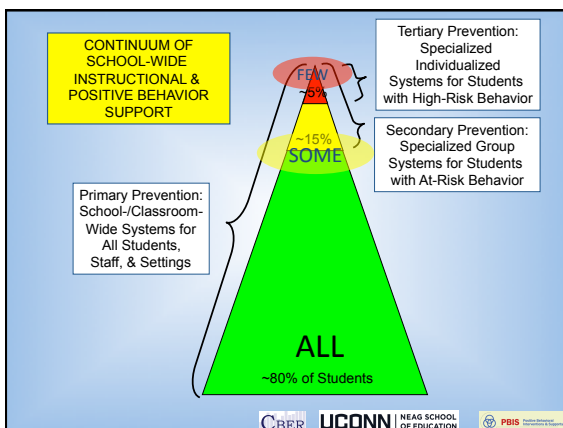
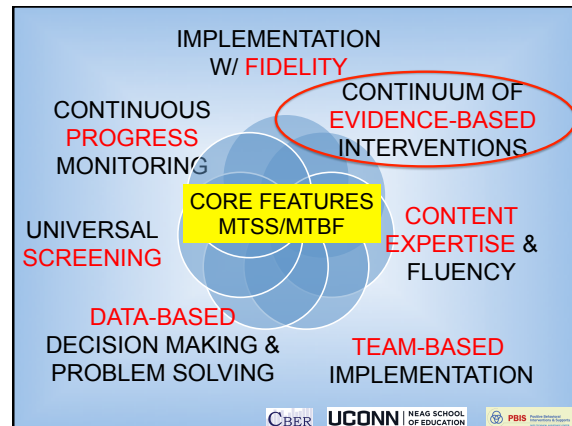
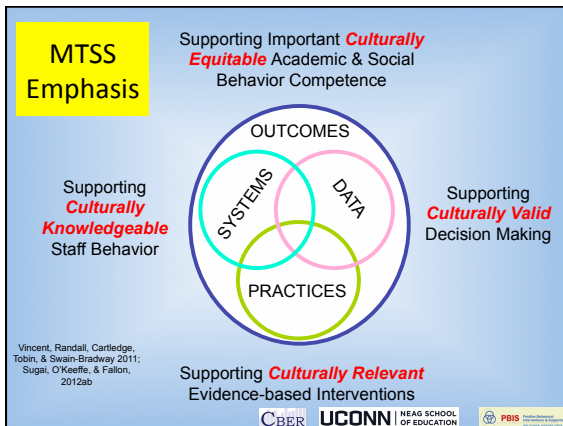


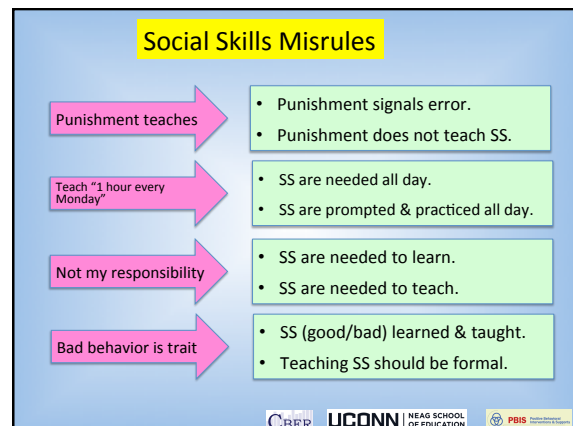
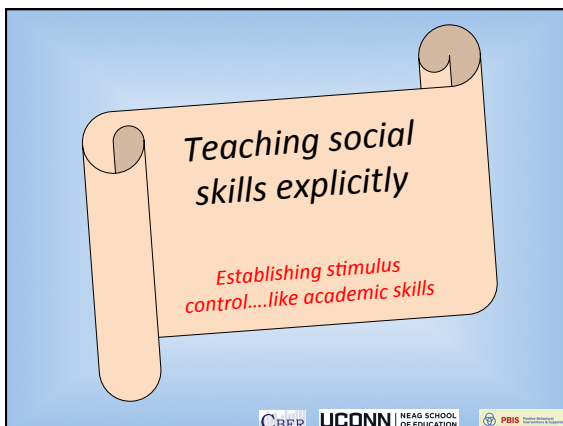
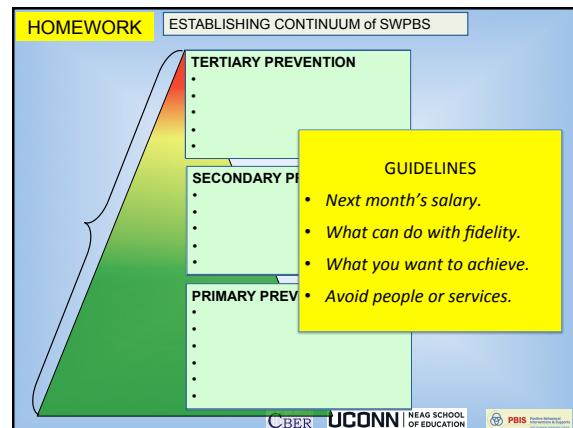
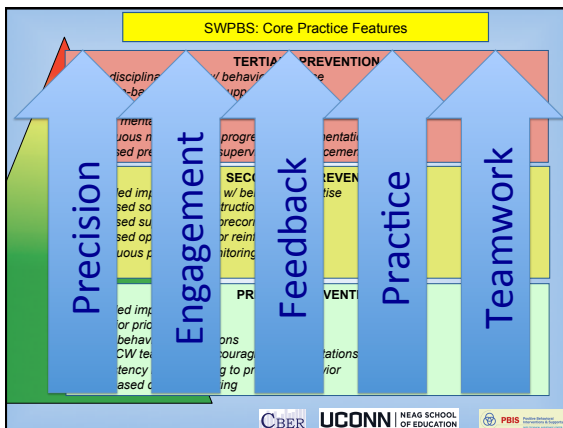
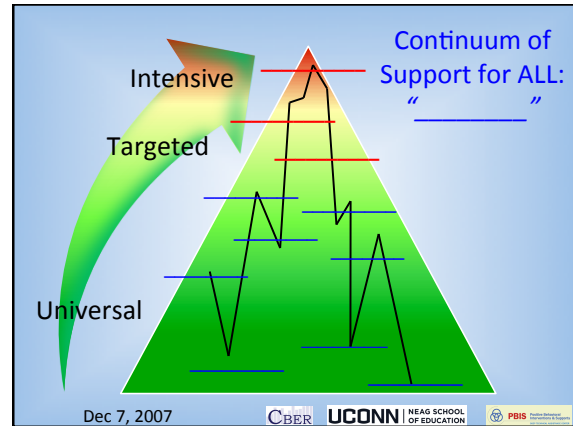
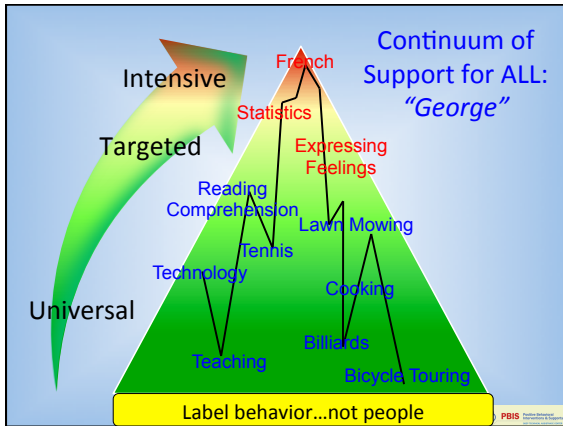
School Climate Self-Assessment - homework

Decision	SWPBS Feature	Action
Yes ? No	1. Do >80% of students engage in socially appropriate interactions w/ peers daily?	
Yes ? No	2. Do >80% of staff have more positive than negative social interactions with their students daily?	
Yes ? No	3. Do >80% of staff model positive expected social behavior daily?	
Yes ? No	4. Do >80% of students experience high levels of successful academic engagement every hour?	
Yes ? No	5. Are we using data to monitor the above?	
Yes ? No	6. Is our team monitoring & coordinating implementation of above?	

UCONN | NEAG SCHOOL OF EDUCATION | PBIS







Teaching/learning mis-rule!!

23
+ 12
35

3. Find x.

4 cm 3 cm

Here it is

CBER UCONN NEAG SCHOOL OF EDUCATION PBS

Teaching calculating hypotenuse of triangle

"Work w/ another partner & do these 4 examples...."

"C² = A² + B² where C is side opposite right angle...."

"I noticed that everyone got #1 & #3 correct. #2 was tricky because no right angle...."

"Watch me... If A = 3 & B = 4, then C² = 25, & C = 5...."

"Work w/ your partner & calculate hypotenuse of triangle for these 3 examples...."

CBER UCONN NEAG SCHOOL OF EDUCATION PBS

"Teaching by"

"I hate this f__ing school & you're a dumbf__!"

"That's disrespectful language, girl. I'm sending you to the office so you'll learn never to say those words again....starting now!"

CBER UCONN NEAG SCHOOL OF EDUCATION PBS

Teaching social behaviors like academic skills

"You got it. Tomorrow let's figure out how to handle cyber-teasing."

"If someone won't stop teasing your friend, you should look cool & walk away w/ your friend..."

"That was great. What would that look like if you were stuck on the bus? In the classroom?"

"Watch. This is how I would do it at a concert."

"Tell me how you would do it if you were in hallway." "At school dance."

CBER UCONN NEAG SCHOOL OF EDUCATION PBS

Emphasizing & Teaching Positive Expectations

CBER UCONN NEAG SCHOOL OF EDUCATION PBS

Teaching Matrix

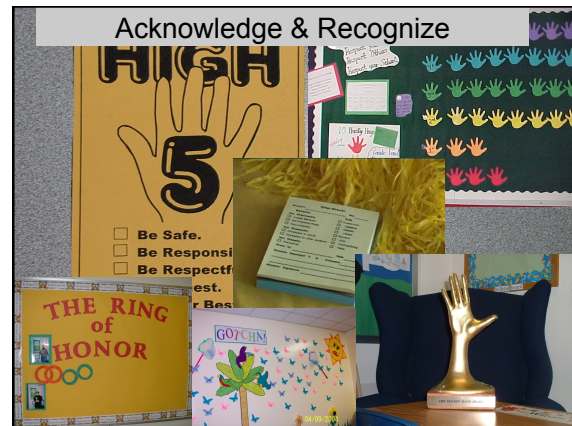
	All Settings	SETTING					
		Hallways	Playground	Cafeteria	Assembly	Bus	
Respect Oneself	Be on task. Give your best effort.	Use appropriate voice.	Follow playground rules.	Use all your food. Select healthy foods.	Study, read, compute.	Follow bus rules.	
Respect Others	Help/share with others.	Use normal voice volume. Walk to right.	Play safe. Include others. Share equipment.	Practice at table.	Whisper. Return books.	Listen/watch. Use appropriate applause.	
Respect Property	Recycle. Clean up after self.	Pick up trash.	Use proper utensils. Clean up eating area.	Push in chairs. Treat books carefully.	Pick up. Treat chairs appropriately.	Wipe your feet. Sit appropriately.	

1. SOCIAL SKILL

2. NATURAL CONTEXT

3. BEHAVIOR EXAMPLES

CBER UCONN NEAG SCHOOL OF EDUCATION PBS



Social Skills Self-assessment

Decision	SWPBS Feature	Action
Yes ? No	1. Do most (80%) skill expectations	
Yes ? No	2. Do we have social skills	
Yes ? No	3. Do we expect	
Yes ? No	4. Do we expect	
Yes ? No	5. Are we	
Yes ? No	6. Is our team more	

1 Minute

CBER UCONN NEAG SCHOOL OF EDUCATION PBIS

Concluding comments

Now what?

CBER UCONN NEAG SCHOOL OF EDUCATION PBIS

Action Steps - Homework

SWPBS Feature	Action
1. What is <u>1 thing</u> you learned that you <u>did not know before</u> ?	
2. What <u>3 "big ideas"</u> will you <u>take back</u> to your colleagues?	
3. What is <u>1 practice</u> you will do <u>tomorrow</u> that you have not done before?	
4. What is <u>1 practice</u> you will consider <u>not</u> doing tomorrow?	
5. What is <u>1 enhancement</u> you can make in your teaching <u>environment</u> to increase likelihood of doing above?	

CBER UCONN NEAG SCHOOL OF EDUCATION PBIS

Upcoming Events

PBIS Forum	SMH Conference	New England PBIS	APBS Conf.	Northeast SWPBS Conf.
Oct 22-23, 2015	Nov 5-7, 2015	Nov 19-20, 2015	Mar 23-26, 2016	May 19-20, 2016
Rosemont IL	New Orleans, LA	Norwood, MA	San Francisco, CA	Mystic, CT

CBER UCONN NEAG SCHOOL OF EDUCATION PBIS

Basic Logic

Vision/Mission
PRACTICES
Leadership Team
Local School/District Implementation

Continuum of Support for All

SR-PLUS
Constitution State

Remaining SWPBS since 2000

19,064

PBIS

Lewistj@missouri.edu
RobH@oregon.edu
George.sugai@uconn.edu
www.pbis.org